

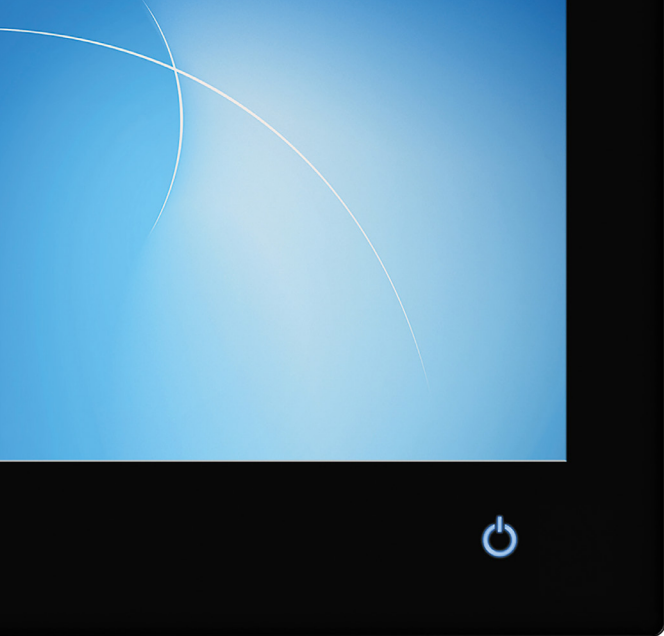
10/2019



ADS-TEC Industrial IT Product Overview



Industrial IT



HMI solution for operating machines and systems

The latest-generation ADS-TEC Industrial PCs have been developed on the basis of our decades of experience and each detail has been optimised. The capacitive touch screen HMIs, which are available in three inch sizes, deliver powerful performance with 8th-generation Intel® processors and do not require a fan. Thanks to the optionally available HILSCHER netJACK modules, various types of fieldbus can be integrated into the systems, that are long-term available. The sophisticated mounting system facilitates easy and fast installation of the Panel PC.

Technology 100% Made in Germany.



Powerful Passive cooling Full HD display Touch screen Usable with gloves



Protection class IP65 Easy mounting Long time available Big-LinX ready



For more information visit
www.ads-tec.de/ipc

Industrial PCs – OPC9000 series



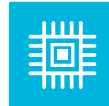
	OPC9016	OPC9019	OPC9024
Display	15.6" TFT Full HD	18.5" TFT Full HD	23.8" TFT Full HD
Touch	PCAP multi-touch		
Processor	Intel® Celeron® 4305UE 2.0 GHz (Whiskey Lake) Intel® Core™ i5-8365UE 1.6 GHz (Whiskey Lake)		
RAM	Up to 32 GB DDR4 RAM		
Interfaces	4 x USB 3.1, 3 x Ethernet, 1 x DisplayPort++, 1 x 5-pin supply socket, 1 x smartcard reader Optional: HILSCHER netJACK module		



Fanless Box PC for control cabinet installation

The new ADS-TEC Industrial PCs for control cabinet installation deliver strong performance without compromising: The sophisticated cooling concept does not require a fan and allows the use of powerful 8th-generation Intel® processors at the same time. With the optional HDBaseT™ module, multimedia signals can be transmitted up to a distance of 100 metres. Thanks to the optionally available HILSCHER netJACK modules, lots of different types of fieldbus can be integrated into the IPC.

Technology 100% Made in Germany.



Powerful



Passive cooling



Easy mounting



Long time available



Big-LinX ready



For more information visit
www.ads-tec.de/ipc

Industrial PCs – IPC9000 series

NEW



IPC9000

Processor

Intel® Celeron® 4305UE 2.0 GHz (Whiskey Lake)
Intel® Core™ i5-8365UE 1.6 GHz (Whiskey Lake)

RAM

Up to 32 GB DDR4 RAM

Mass storage

Up to 512 GB Flash SSD (configurable as RAID)

Interfaces

4 x USB 3.1, 3 x Ethernet, 1 x DisplayPort++, 1 x 5-pin supply socket, 1 x smartcard reader
Optional: HDBaseT™ module, HILSCHER netJACK module



HMI solution for operating machines and systems

ADS-TEC Industrial PCs and Displays have been successfully tested many times in harsh environments and perform their tasks reliably, for example in production environments. The HMIs with capacitive touch screens and long-term availability are suitable for numerous customer applications and have been pared down to the essentials without making any compromises.

Technology 100% Made in Germany.



Passive cooling



Full HD display



Touch screen



Usable with gloves



Protection class IP65



Big-LinX ready



For more information visit www.ads-tec.de/ipc

Industrial PCs and Displays – OPC8017/24



	OPC8017	OPC8024	OPD8017	OPD8024
Display	17.3" TFT Full HD	23.8" TFT Full HD	17.3" TFT Full HD	23.8" TFT Full HD
Touch	PCAP multi-touch			
Processor	Intel® Celeron® 2980U 1.6 GHz Intel® Core™ i5-4300U 1.9 GHz		-	
RAM	4 GB DDR3 RAM 8 GB DDR3 RAM		-	
Interfaces	2 x USB 3.0, 1 x USB 2.0, 2 x Ethernet, SD card slot		3 x USB 2.0, 1 x USB 2.0 Slave, 1 x HDMI, 1 x DisplayPort Optional: HDBaseT™ module	



Stainless steel IPC solution for the highest hygiene requirements

Industries like the food, beverage and pharmaceutical industries are subject to the most exacting hygiene requirements. The slim, fully-enclosed stainless steel housing on the ADS-TEC terminals and displays provide an efficient and reliable basis for controlling and visualising production processes. The innovative sandwich housing technology enables passive cooling and thus facilitates the high performance of the i5 processor. The award-winning fanless and screwless design completes the functionality of the MMT/MMD8000 series. [Technology 100% Made in Germany.](#)



Passive cooling



Full HD display



Touch screen



Usable with gloves



IK08 Shock resistance



Protection class IP65



Wireless



User identification



Long time available



Big-LinX ready



View
product video

Machine Mounted Terminals and Displays – MMT/MMD8000 series



MMT8017



MMT8024



MMD8017



MMD8024

	MMT8017	MMT8024	MMD8017	MMD8024
Display	17.3" TFT Full HD	23.8" TFT Full HD	17.3" TFT Full HD	23.8" TFT Full HD
Touch	PCAP multi-touch			
Processor	Intel® Celeron® 2980U 1.6 GHz Intel® Core™ i5-4300U 1.9 GHz		-	
RAM	4 GB DDR3 RAM 8 GB DDR3 RAM		-	
Interfaces	2 x USB 3.0, 1 x USB 2.0, 2 x Ethernet, 1 x SD card slot		3 x USB 2.0, 1 x USB 2.0 Slave, 1 x HDMI or DisplayPort Optional: HDBaseT™ module	



The perfect hygiene solution for your production processes

The new MMD9016 was designed as a compact alternative to our MMD8000 series, which has been established for years. Reduced to its core functions, the slim MMD9016 also has the same stainless steel housing as the MMT/MMD8000 series, which is key for hygiene applications. Due to its modular design, different holders can be mounted on the reverse side. A tube adapter, direct mounting and a VESA mount are available for this purpose. A DisplayPort and HDMI are optionally available as electrical interfaces. [Technology 100% Made in Germany.](#)



Full HD display



Touch screen



Protection class IP69



Long time available



For more information visit
www.ads-tec.de/machine-terminals

Machine Mounted Displays – MMD9000 series



MMD9016

Display	15.6" TFT Full HD
Touch	PCAP multi-touch
Interfaces	1 x USB 2.0 Slave, 1 x HDMI or DisplayPort



Vehicle terminal for toughest environments

The VMT9000 series is flexible in terms of use thanks to its various display sizes. The 10-inch and 12-inch screens are suitable for all types of vehicles in the logistics, agricultural and construction machinery industries. Intended for use in MES applications, the 12-inch widescreen and 15-inch models provide the optimum display sizes. The VMT9000 series, which works reliably even in the most challenging environments, is characterised by a particularly compact, yet extremely rugged, design.

Technology 100% Made in Germany.



Powerful



Passive cooling



Usable with gloves



Sunlight readable



IK08 Shock resistance



Protection class IP66



UPS function



Ignition function



Long time available



Big-LinX ready



View product video

Vehicle Mounted Terminals – VMT9000 series



VMT9010



VMT9012



VMT9015



VMT9112

	VMT9010	VMT9012	VMT9015	VMT9112
Display	10.4" TFT XGA	12.1" TFT XGA	15.0" TFT XGA	12.1" TFT WXGA
Touch	PCAP multi-touch Resistive touch			PCAP multi-touch
Processor	Intel Atom® x7-E3950 2.0 GHz (Apollo Lake)			
RAM	8 GB LPDDR4 RAM			
Wi-Fi	IEEE 802.11 a/b/g/n/ac			



For mobile use indoors and outdoors

For all instances in which your processes require constant access, the TabX® ITC8113 with capacitive 10-finger multi-touch display is there for you as a modern Windows® 10 tablet computer with powerful Intel® processor architecture. With comprehensive accessories and an attractive design, the TabX® industrial tablet computer is the ideal mobile companion in the professional industrial environment. [Technology 100% Made in Germany.](#)



Full HD
display

Touch screen

Usable with
gloves

IK04 Shock
resistance

Battery
operation



Protection
class IP65

Wireless

User
identification

Camera

Big-LinX
ready



For more information visit
www.ads-tec.de/tablet

Industrial Tablet Computer – TabX® – ITC8000 series



ITC8113

Display	13.3" TFT Full HD
Touch	PCAP multi-touch
Processor	Intel® Celeron® 2980U 1.60 GHz Intel® Core™ i5-4300U 1.90 GHz
RAM	4 GB DDR3 RAM 8 GB DDR3 RAM
Battery	14.6 V 40 Wh (2 x battery slots)



Security solution for plant and machinery

Simple and intuitive to configure, the firewall carries out demanding security tasks and is ideal for use as a remote maintenance centre or as a router in a control cabinet. By implementing IoT standards, such as OPC UA and MQTT, the IRF1000 series provides a flexible basis for use in Industry 4.0. [Technology 100% Made in Germany.](#)



WWH data push



Smartcard security concept



Key switch



Long time available



Big-LinX ready



We can provide you with the IRF1421 free of charge for a test in your IT environment
Testkit



For more information visit www.ads-tec.de/firewall

Industrial Firewalls and Routers – IRF1000 series

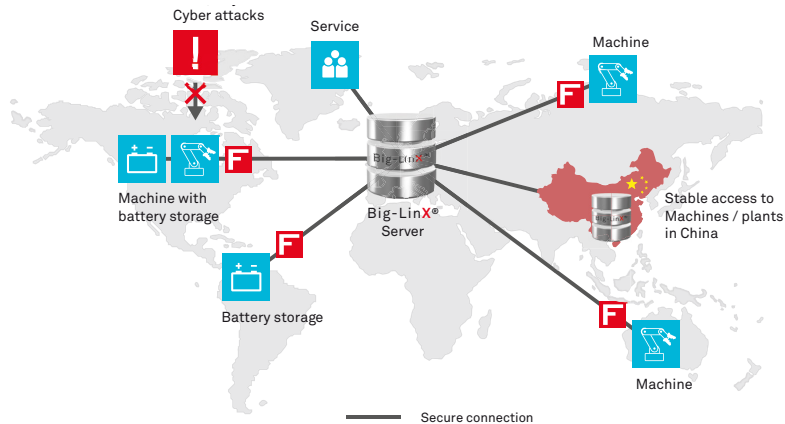


IRF1401



IRF1421

	IRF1401	IRF1421
Housing	Plastic housing	
Interfaces	4 x 100 Mbit/s 1 x Digital IN 1 x RS485	
Mobile connectivity	-	2G, 3G, 4G/LTE



Big-LinX® IloT Service Platform

The secure basis for Industry 4.0

Big-LinX provides a versatile and scalable IloT Service Platform in the form of a powerful modular solution for a wide range of IloT applications. The secure connection of decentralised systems, the management of distributed gateways and comprehensive services for data collection, sharing and monitoring, all contribute significantly to implementing the complex Industry 4.0 architectures in local and global networks.

[Technology 100% Made in Germany.](#)



We can provide Big-LinX free of charge to test your IloT solution
Test access



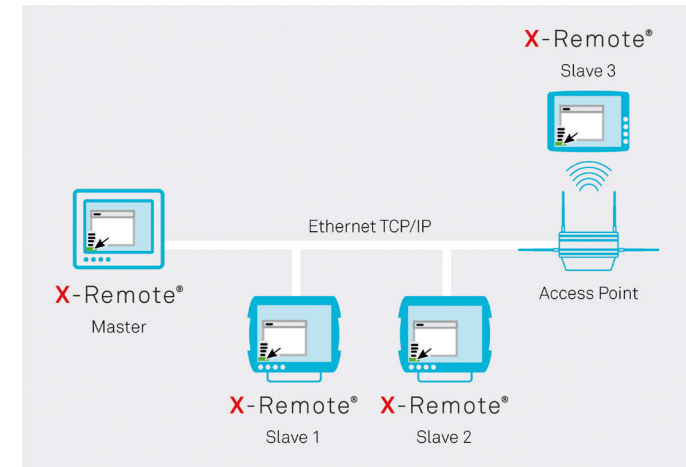
View
product video



We can provide X-Remote for a free test period
Test access



View
product video



X-Remote® Remote Desktop Software

Remote control of desktop PCs via local networks and the Internet

ADS-TEC has developed the X-Remote software for the real-time operation of distributed plants, systems and processes. Windows-based PC screen interfaces, including the operation thereof, can be distributed and multiplied via the Ethernet and the Internet. This means that parallel displays can also be realised for large-scale systems, whereby only one powerful PC is required for the actual application and, otherwise, basic and inexpensive thin clients are sufficient. X-Remote is available to you free of charge for 30 days after you have downloaded it.

[Technology 100% Made in Germany.](#)



ADS-TEC Industrial IT Technology for Professionals

ADS-TEC Industrial IT GmbH is part of the ADS-TEC Group. In addition to the headquarters in Nuertingen near Stuttgart, the production site is located in Dresden.

For over 35 years, the company has been developing and producing many tried-and-tested IT solutions with long-term availability for industrial use.

Its product portfolio includes terminals, Industrial Panel PCs and Tablet PCs, as well as IIoT services for the remote maintenance of machines and systems. All stages of product development as well as the manufacturing take place in Germany in our own premises for all products.



Technology
Provider
Platinum 2019



For more information visit
www.ads-tec.de



View
company video



Industrial IT

