



TabX[®]
Industrial Tablet Computer
Mobile operating devices for
professional and flexible use



Industrial IT

Tried-and-tested technology in the latest generation. The industrial tablet computers from ADS-TEC have undergone consistent further development for professional mobile use. High performance, brilliant Full HD display and optimised for applications in service environments – the TabX® ITC8113 scores high marks both for indoor and outdoor use. Technology 100% made in Germany.

TabX®
Industrial Tablet Computer
ITC8113



ITC8000 Series Product Benefits

TabX® – State-of-the-art technology for mobile use **Efficient and reliable**

If you require continuous access to your processes, then the TabX® ITC8113 with capacitive 10-finger multi-touch display presents itself as a modern Windows® 10 tablet computer with the latest Intel® processor architecture. Reduced weight, a comprehensive range of accessories and an attractive design – the industrial tablet computer TabX® is the ideal companion in professional industrial environments.



Operating philosophy **Direct and intuitive via multi-touch**

- Robust 10-finger multifunction touch screen with high accuracy
- Operation with gloves is possible
- Anti-reflective front panel
- Zoomable, configurable soft keyboard in various language layouts / API interface
- Extremely fast boot-up process for quick device start



Broadening horizons **See more with the Full HD widescreen display**

- Screen size: 13.3"
- Resolution: 1920 x 1080 pixels in 16:9 format

HIGHLIGHTS

- 13.3" Full HD display
- The latest multi-touch technology



Convenient service access **Fast and easy**

- Direct access to hard drive and CMOS battery
- Modern SSD hard drive memory for high speed

Wireless communication **Invisibly connected**

- WLAN 802.11 a/g/n
- Bluetooth 4.0 CLASS 1 and CLASS 2
- UMTS/LTE data communication module

Tried-and-tested fan concept **Intelligent and cool**

- The inside of the device is hermetically sealed – no air exchange between the interior and surroundings
- Fan concept with IP protection
- Optimised heat dissipation through integrated heat pipes



Motorsport technology **Robust and proven in practice**

- An enclosed, glass-fibre reinforced monocoque frame manufactured in one piece provides the basis for extreme robustness and the most compact design
- A rubber jacket provides protection against jolts and impacts

ITC8000 Series Product Benefits



Front keys **Convenient operation**

Six illuminated front keys:

- Power button
- Fn key for setting the display brightness and volume (second level)
- Task switching using the toggle key / Fn:
Increase volume
- Rotate screen / Fn:
Decrease volume
- Right mouse-key / Fn:
Increase brightness
- Show soft keyboard / Fn:
Decrease brightness



Camera function **Pictures speak louder than words**

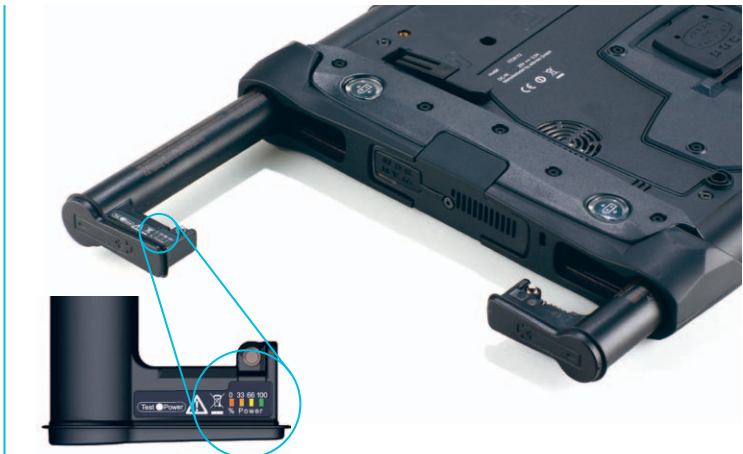
- Optional integrated camera with mechanical autofocus



Protected interfaces **Open for standards**

Interfaces with rubber cap:

- 2 x USB 3.0 (each port has a load capacity of 1 A)
- 1 x USB 3.0, recessed installation in »dongle slot«
There, the stick (up to 52 x 16.5 x 8.2 mm) is fully protected in the closed device
- 1 x 1 Gbit/s Ethernet RJ45
- DC IN 20 VDC



Hot-swap capability **Enabling continuous mobile work**

- Device equipped with two identical lithium-ion smart batteries
- Battery release and replacement also possible while wearing gloves
- Operation possible with just one battery
- A battery can be changed during operation without interruption (hot swap)
- Charge level can be read off directly from the battery

ITC8000 Series Accessories



Mounting **Multiple docking possibilities**

- Docking for table and wall mounting:
 - Possible to connect to VESA adapters
 - Robust ball locking device for securely and easily locking to docking stations by means of a snap-in connection
- Docking ports:
 - 4 x USB 2.0
 - 1 x RJ45
 - DC/IN
- Available with and without keylock



Recharging **Quickly back in operation**

- External charging station for two batteries
- Horizontal or wall-mounted operation



Transport case **Protecting the device against damage**

- Robust injection-moulded hard-shell construction
- Four additional batteries for long mobile working, the user's guide, power adapter, cables and accessories can all be stowed safely in separate compartments
- Soft, rubberised handle for carrying comfort
- Stackable
- Two case sizes available



Carrying comfort **Optimised for its intended use**

- Four robust M5 threaded inserts for carrying straps and mounting supports:
 - Carrying and positioning handle
 - Three-point strap for secure »hawker's tray« portability

ITC8000 Series Applications

Versatile use **TabX® industrial tablet computers ready for use at any time as a mobile operator unit**

- Optimised for professional indoor and outdoor use
- In vehicle workshops for vehicle diagnosis
- For mobile plant operation, plant maintenance and measurement technology
- For applications in materials management and logistics



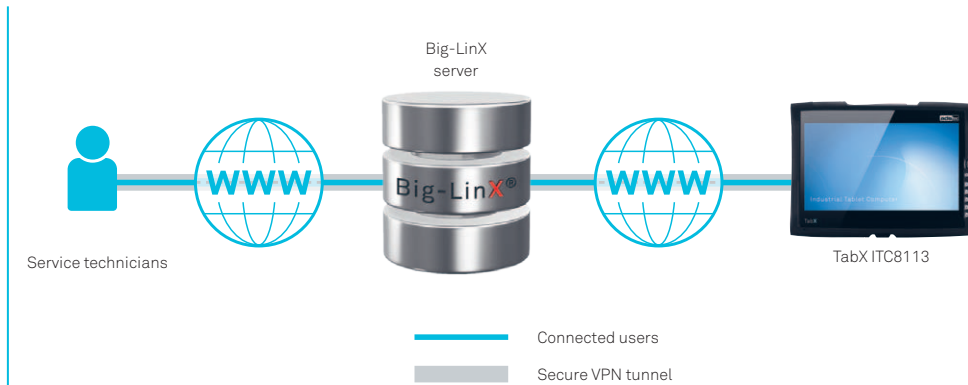
X-Remote®

X-Remote® Duplication and remote operation of PC desktops via local networks and the Internet

Your advantages at a glance

- Direct real-time control and operation of distributed systems and processes with the ADS-TEC remote control software »X-Remote«
- Windows-based PC monitor surfaces, including the operation thereof, can be duplicated and dynamically adapted to display screen resolutions
- Simple construction of a monitoring centre in a network in which multiple remote desktops can be displayed on one screen and operated if necessary
- X-Remote can also be set up on mobile terminals for operation and monitoring – even via WLAN

TabX[®] even better with ADS-TEC software tools

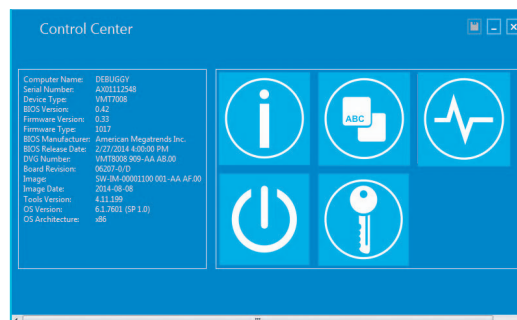


Secure connection in the event that service should be necessary **With the ADS-TEC Big-LinX[®] remote management client**

With the Windows-based client, always stay securely connected to ensure smooth operation of the TabX.

- Secure connection by means of Smartcard-secured VPN tunnel
- Software, firmware and BIOS are always kept up-to-date via the connection to the ADS-TEC IoT service platform Big-LinX

With Big-LinX, a central platform for remote maintenance of any number of terminals is available for technicians or service groups.






Configuration Center **Customised settings quick and easy**

- USB lock to protect against unauthorised access
- Option of soft keyboard configuration
- Front panel keys for customer-specific assignment

ADS-TEC Service – more security

ADS-TEC service packages **Extended Warranty in Basic, Silver and Gold or comprehensive protection with »Full Comprehensive Coverage FCC«**

In order to cover technical malfunctions it is possible, beyond the statutory warranty, to purchase an ADS-TEC industrial IT product for an extended service. In this way, it is possible to have longer-term protection against repair costs due to technical malfunctions.

	without service package			
Protection against technical malfunctions	– *	✓	✓	✓
Contract term	– *	36/60 months	36/60 months	36/60 months
Processing time for the industrial IT products in event of service	20 AT	10 AT	5 AT	3 AT
Protection against mechanical damages	– *	–	–	–

ADS-TEC Services **Overview of the packages**

With the Basic, Silver and Gold packages, defined reaction times during 36 or 60 months can be specified for the repair, in order to keep the downtime as short as possible. These are calculated in working days (AT) from arrival of the Service Article at ADS-TEC until once again returned to the transport provider after successful repair, exclusive of any possible period subject to a cost estimate (for a repair outside of the guarantee service).

	without service package	
Repair costs are accepted, even in the event of mechanical damage	– *	✓

ADS-TEC Services **Comprehensive protection »Full Comprehensive Coverage FCC«**

»Comprehensive Coverage« is the service which is comparable to fully comprehensive insurance for industrial computing products, which also takes effect in the event of sudden and externally-caused defects such as damage caused by a fall or the mechanical destruction of a touch-screen. All repair costs are covered.

ADS-TEC Services **Services & customising made to measure**

Tailored to your requirements, we provide other services such as the planning and implementation of roll-outs or the customising of operating systems and applications such as soft keyboards and RFID. Our made-to-measure service, support and maintenance agreements also ensure that you have the best possible support over the entire service life.

*only contractually agreed warranty

ITC8000 Series Technical data

Device data

ITC8113

Display	13.3" TFT, resolution 1920 x 1080 pixels, Full HD, LED backlight
Touch	Capacitive multi-touch (PCAP)
LED indicators	Power/Sys, HDD, WLAN, Bluetooth
Front panel keys	Six front panel keys with standard assignment: - Power button - Fn key (second level) - Toggle key / Fn: Increase volume - Rotate screen / Fn: Decrease volume - Right mouse-key / Fn: Increase brightness - Soft keyboard / Fn: Decrease brightness
Processors/chipsets	Intel® Celeron® 2980U 1.6 GHz, Intel® Core™ i5-4300U 1.9 Ghz
RAM	4 GB DDR3 RAM (optional 8 GB DDR3 RAM)
Mass storage	2.5" SSD SATA, SSD (min. 100 GB)
Interfaces	2 x USB 3.0 (each port has a load capacity of max. 1 A) 1 x USB 3.0 recessed installation (max. 1 A) 1 x 1 Gbit/s Ethernet RJ45 1 x Display port Docking connector
Sound	Integrated stereo speakers/microphone
Wireless	WLAN 802.11 a/g/n, Bluetooth CLASS 1 and CLASS 2 Optional: GSM/UMTS/GPRS/3G/LTE
Slots	Optional: SIM card reader for mobile communication card SIM card for ads-tec SCM (smart card based management)
Camera	Optional integrated camera with mechanical autofocus
Batteries	Battery 14.3 V 40 Wh, with charge level indicator Two battery slots for lithium-ion smart batteries (each approx. 250 g)
Power adapter	External power adapter (input 100-240 VAC; output 20 VDC)
Operating system	Windows® Embedded Standard 7 Windows® 7 Ultimate Windows® 10 IoT
Approval / certificates	CE
Protection class	IP53 (IP65 at front)
Operating temperature	0 °C to +40 °C
Dimensions	355 x 262 x 32 mm (42 mm at corner support points)
Weight	Ca. 1.8 kg without batteries

Accessories

Batteries	Replacement stick-type battery with charge level indicator 40 Wh	
Transport / storage	Robust transport case made of plastic (available in two sizes)	
Charger	External charger for two batteries	
Brackets	Carrying/positioning handle, Three-point strap	
Replacement power adapter	External power adapter (input 100-240 VAC; output 20 VDC) (suitable for ITC8113 / charging station / port replicator)	
Docking station	DC/IN: 20 VDC	Bracket: Rotatable/tiltable
	USB 2.0: 4 slots	Installation: VESA 75 and 100
	LAN: 1 Gbit/s Ethernet RJ45	Lock: optional



Company headquarters (above) in Nürtingen near Stuttgart, production site in Wilsdruff near Dresden

ads-tec GmbH **A strong partner**

- Products from ADS-TEC have been developed in-house for over 35 years
- 100% depth of development is the basis for long-term and individual solutions
- Services: concept, excellent design, development, fabrication and long-term support
- Modern processes for development, supply chain management, production and service
- References and applications: e.g., automation, logistics, medicine and the construction equipment industry as well as network operators, energy suppliers and public utilities
- International certifications for IT products and battery storage
- In-house laboratory and testing facilities
- Highest safety standards
- Leading technology and current technological standards
- Permanent technology transfer in cooperation with universities
- Intel® Technology Provider Platinum Partner and member of the Intel® Internet of Things Solutions Alliance
- Involvement in networks and associations
- Numerous ADS-TEC research projects funded by federal and state governments

Technology 100% made in Germany



Technology
Provider
Platinum 2018

ads-tec GmbH
Heinrich-Hertz-Straße 1
72622 Nürtingen
Phone +49 70 22 25 22-200
Fax +49 70 22 25 22-402
sales@ads-tec.de
www.ads-tec.de



 TECHNOLOGY
MADE IN GERMANY



Industrial IT

